



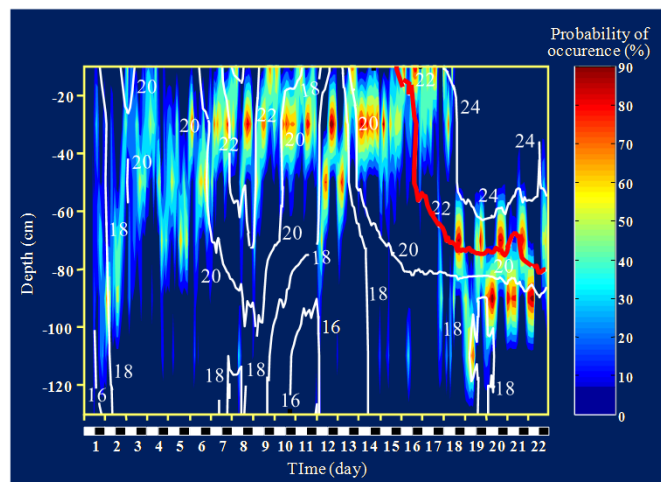
The concept of aerobic metabolic scope, An historical perspective

Guy CLAIREAUX
Université de Bretagne Occidentale,
Brest, France

Fry's paradigm provides a quantitative, operational basis to define one species' niche using metabolic units that are observable, common, and important to all organisms and ecological functional groups.

Recently, the mechanisms responsible for limiting ectotherms aerobic metabolic scope at temperature extremes (oxygen- and capacity-limited thermal tolerance hypothesis) has been a hotly debated point, leading some authors to question the concept of aerobic metabolic scope all together.

To help enlighten the debate, my presentation aims at putting the concept of aerobic metabolic scope in its historical context by reviewing an objectively biased sample of works that have been conducted since Fry's initial contention.



Friday January 10th at 10.10
Seminar room (Room 127 building 1131)