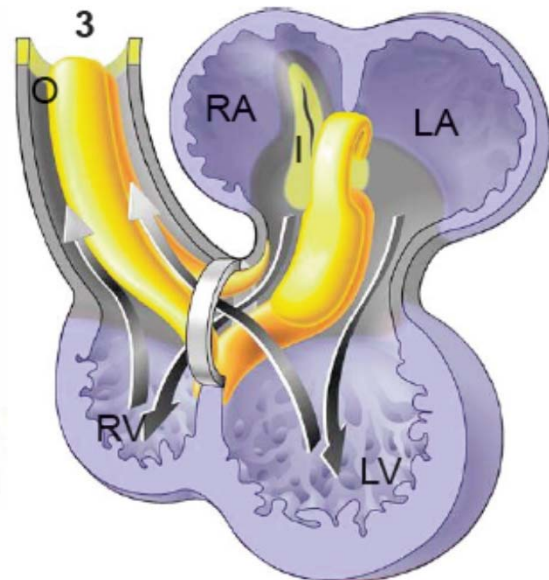




Concepts of cardiac development

Professor Antoon Moorman
Department of Anatomy,
Embryology & Physiology
Amsterdam Medical Center

How does the heart tube forms from a flat embryonic disc? How does it grow, without cell division and without hypertrophy? How is it possible that this tube, while pumping is transformed into a double circuited heart? In this seminar these issues will be dealt with.



Thursday February 6th at 10.15 (coffee room at Zoophysiology, building 1131)